

PS12-USB Automatic USB/Battery Pencil Sharpener Operating Instructions

Please read the following instructions carefully before operating your sharpener

To be used under adult supervision only

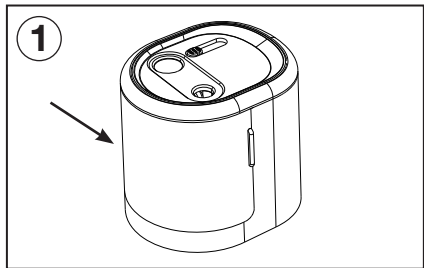
Connecting your Sharpener

This automatic pencil sharpener will operate using either batteries (not included) or via a USB port (cable included).

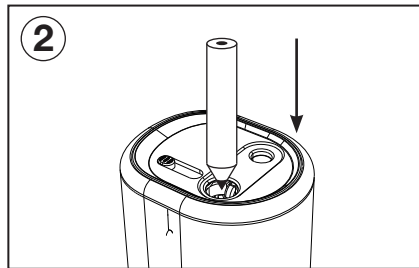
To operate using the USB cable, insert the connector into the rear of the sharpener marked "USB". Insert the USB socket preferably into a mains USB plug or alternatively into your computer USB port.

PLEASE NOTE: If the sharpener is connected to a computer USB port, the power may not be as efficient to fully power the sharpener as it would be if the USB was connected to a mains power outlet.

Using the Sharpener

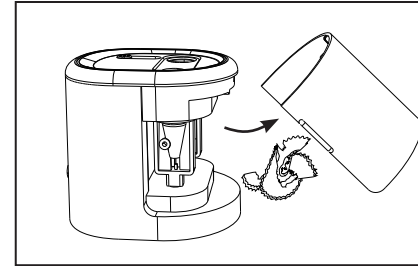


Ensure the sharpener is placed on a stable, rigid surface before inserting a pencil into the hole. Also ensure the shaving tray is in place and tightly closed before use.



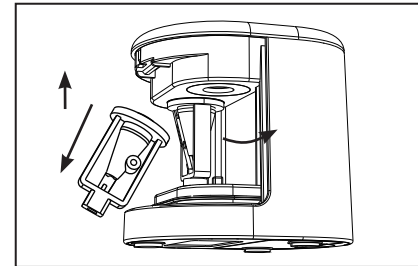
Guide the pencil into the appropriate hole size and for 9-12mm pencils open the safety-lid cover first to expose the hole. The motor will start automatically. Hold pencil steady while sharpening and remove after 3-4 seconds (prolonged time can damage motor).

Emptying the Shavings



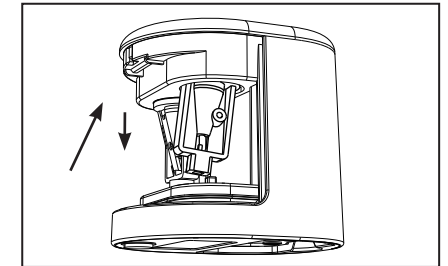
1. Empty the shavings tray when it is half full. The sharpener will not operate properly and serious damage can be caused if the tray is over-filled.
2. Hold the sharpener vertically over a bin before removing the shavings tray.
3. Hold both sides of the cover and pull it out. Clear the contents of the shavings tray and place the cover back firmly.
4. The sharpener will not operate unless the shavings tray is replaced correctly.

Replacing the Blade Units



The Rapesco PS12-USB is supplied with 2 x standard size and 2 x jumbo size replacement blade units.

1. Remove the cover, ensuring that shavings have been emptied first.
2. Remove the old blade units by lifting them into the sharpener to remove them from their mounting.



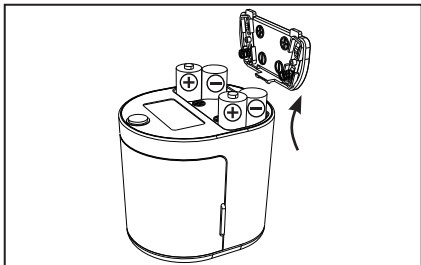
3. Insert the replacement blade unit, pressing up into the sharpener and lowering into position.

4. Reattach the cover.

PLEASE NOTE: Do not touch the cutting blades themselves. Remove and install new blade units by holding the plastic casing only.

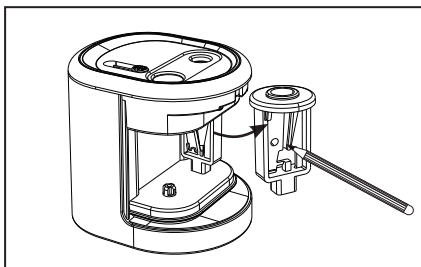
Dimensions	Weight	Compatible Pencil Sizes
L 84 x W 72 x H 76mm	169g	6mm to 12mm

Installing Batteries



1. Open the battery compartment at the bottom of the sharpener.
2. Insert four new AA (1.5v) Alkaline or rechargeable batteries into the compartment according to the diagram below making sure to observe correct polarity.
3. Close battery compartment.

Removing broken lead from the blade unit



To remove a broken pencil lead from the cutter unit, remove the unit as shown in **'Replacing the Blade Units'**. Use the tip of a pencil to dislodge the lead by sliding it back and forth against the blade until the broken lead is released. Do not use a metal object (eg. scissors or screwdriver as this may damage the blade).

Cleaning your Sharpener

Regular cleaning will ensure that your sharpener operates efficiently.

1. Use a small brush (e.g. thick paintbrush or toothbrush) to clean the cutting blade. Never use metal objects as this may damage the cutting blade.
2. The shavings tray can be removed and cleaned with water only, but ensure it is fully dry before reusing.
3. Do not clean the main sharpener unit with water or any other liquids.

Coloured Pencils

1. Sharpening coloured pencils causes wax to build up on the cutting blade.
2. We recommend alternating between coloured and graphite pencils as graphite will help to clean the blade, as well as regular cleaning as per the instructions above.

Tips & Warnings

1. Applying too much pressure or forcing the pencil may cause the motor to jam. If speed slows, reduce pressure on pencil until motor returns to normal speed.
2. The sharpener will not function while the front cover is removed. Ensure the cover is in place before commencing sharpening.
3. Sharpening coloured pencils will leave a residue on the blades and it is important to clean the sharpener after use.
4. Please note that pastel pencils are much more abrasive than graphite pencils and can cause sharpener blade to require frequent replacement.
5. Never pull on the cord to turn the sharpener off.
6. Do not use for sharpening crayons, chalk or soft waxy pencils. Such material will clog the sharpener blades.
7. DO NOT touch or attempt to remove the actual blades off the cutting unit.
8. DO NOT drop the unit.
9. As with all electrical appliances, keep out of the reach of small children and DO NOT insert fingers into the cutting holes.
10. This is a pencil sharpener only, do not insert any other objects into the sharpener.
11. Do not mix old and new batteries, always replace all 4 batteries at the same time.
12. Do not mix alkaline, standard (carbon-zinc), or rechargeable (nickel cadmium) batteries, all 4 batteries must be the same type.
13. To avoid damage from battery leakage, remove batteries when sharpener is not used for long periods.



Do not dispose of electrical appliances as unsorted municipal waste, use separate collection facilities.

Contact your local government for information regarding the collection systems available.